

## Balmoral Offset Lever Pad



### Features

- **Solid die cast construction with heavy duty spring cassette**  
Sturdy feel and consistent 90 degree lever return
- **Sculpted ergonomic lever and low friction nylon bush**  
Easy to grip and smooth action
- **Supplied with screw pack to suit 60-70mm profiles**  
Everything needed for installation included
- **Colour coordinated screw heads**  
Perfectly matching hardware, even down to the smallest details
- **Baseplate in common with all Balmoral handles**  
Same routing detail regardless of product variant chosen
- **Wide backplate**  
To suit cylinder guards and accommodate larger cylinder preparation
- **Supplied with care instructions**  
Helps the homeowner to keep the hardware in optimal condition
- **Supplied fully assembled**  
Simple and quick installation, no need to fit springs or lever
- **Each part packaged in a separate chamber, but supplied as a set**  
No scratching of parts during transit



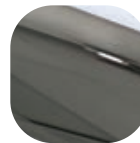
Hardex Chrome



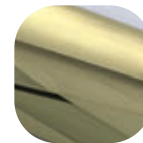
Hardex Satin



White



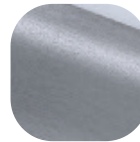
Hardex Bronze



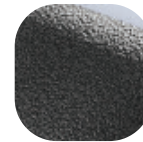
Hardex Gold



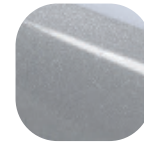
Black



Hardex Graphite



Antique Black



Silver



Mechanical Guarantee



PVCu Timber Composite



FIRE FD30 BS 476

### Balmoral Offset Lever Pad

#### Ordering Details

#### Product

#### Balmoral Offset Lever Pad

Finish	Part No.
Hardex Chrome	1D151
Hardex Satin	1D152
Hardex Bronze	1D153
Hardex Gold	1D155
Hardex Graphite	1D158
Antique Black	1D156
White	1A150
Black	1A151
Silver	1A152

#### Technical Information

##### Corrosion resistance

Meets the requirements of BS EN 1670:2007 Grade 5 (480 hours)

##### Operation

Endurance tested in excess of 200,000 cycles

##### Performance

Tested to meet the requirements of PAS 24 as part of a compliant door set.  
30 minute fire test to BS 476: Part 20/22: 1987

#### Material Specification

Handle Grip and Backplate: High quality Zinc for all Hardex finishes and Antique Black. High quality Aluminium for White, Black and Silver finishes

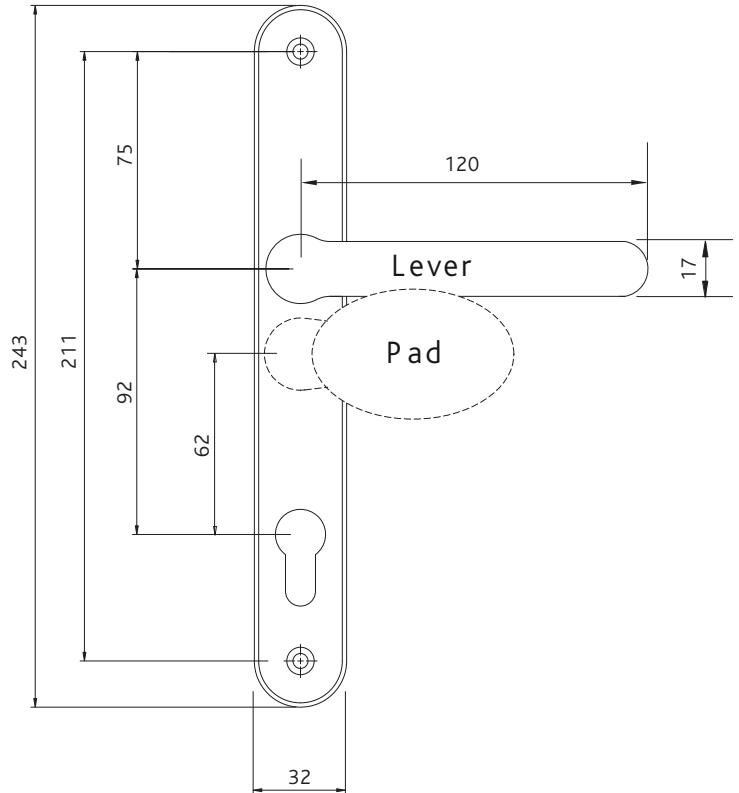
Coatings: Hardex Chrome, Hardex Satin, Hardex Bronze, Hardex Gold, Hardex Graphite, Antique Black, White, Black and Silver

Spindle / Screws: Machine screws with colour coordinated heads for handle.  
60mm - 70mm profiles (2 x 8mm x 90mm spindle, 2 x M5 x 70mm and 2x M5 x 80mm screws)

Cylinder: Euro Cylinder, 92mm / 62mm PZ

#### Maintenance

For continued protection of the quality finish and appearance, Fab&Fix advise routine cleaning of all our external hardware. Moving parts should also be lightly lubricated at least twice a year. This procedure is particularly essential if products are used within a 25-mile radius of coastal areas or close proximity to building sites or large industrial areas, where more frequent cleaning may be required to prevent the accumulation of corrosive contaminants.



All dimensions are in mm and are nominal.  
Fab&Fix reserves the right to change specification without notice  
It is the responsibility of the door manufacturer to ensure that the finished product meets any required safety and performance specification.

#### Packaging

##### Handles

Individually bagged with screws and care instructions.  
15 handles in an outer box.